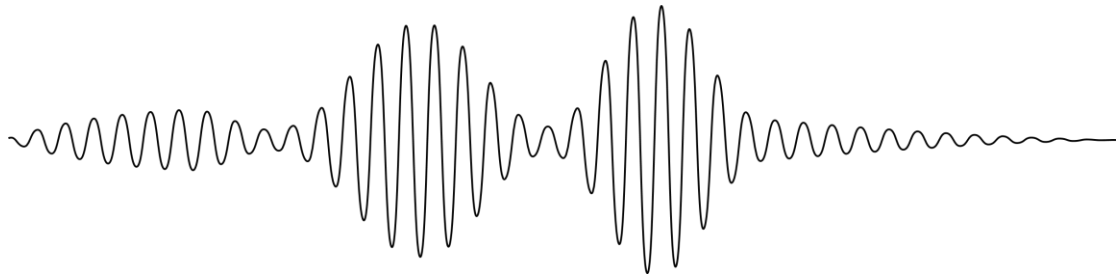




**HELLENIC
PETROLEUM**

**Hellenic Petroleum Exploration & Production of
Hydrocarbons SA**



**KYPARISSIAKOS GULF ACOUSTIC MONITORING
PROJECT**

**“COASTAL ZONE INSPECTION FOR THE PRESENCE OF
MARINE MAMMALS”**

Report



OCEANUS LAB

**(Laboratory of Marine Geology & Physical
Oceanography)**

Department of Geology University of Patras

1. Introduction

From the 9th to the 14th of March 2022 an inspection for marine mammals presence was carried out by the Laboratory of Marine Geology & Physical Oceanography, Department of Geology, University of Patras, at the coastal zone of the two study areas. The coastal areas, where the access was not possible, were approached and filmed by the team using the “Sea Master” vessel, while the remaining were inspected by car.

2. Survey Planning

After the completion of each acoustic monitoring post-survey, the team inspected the coastal areas using “Sea Master”, while the remaining were inspected by car. A coastline of 83 nm was inspected in the Kyparissiakos Gulf.

All of the areas surrounding the surveyed area by “SW COOK” were visually inspected. The following maps show the inspection of the coastline. The continuous orange lines represent the inspection performed by the team using the vessel “SeaMaster”, who were continuously taking photos and observing through binoculars the coastline. The points represent the coastline inspection performed by the onshore team using a vehicle. The onshore team was taking photos along the coastline at the areas with the highest likelihood of marine mammal presence based on the coastal morphology and sea currents directivity.

The procedure was as followed :

1. Approach the area using vessel “SeaMaster” at the minimum possible distance, visual inspection of the area with binoculars and photo-shooting.
2. Approach the area by car and on foot, visual inspection of the area with binoculars and photo-shooting.



3. Results

Throughout the inspection, no marine mammal was detected along the coastal zone.

The following map (Fig.3.1) show the areas inspected, while a set of selected photographs for some of the stations is presented afterwards, below the maps. In figure 3.2 is presented the inspection of the coastline surrounding the survey area and the selected photos.

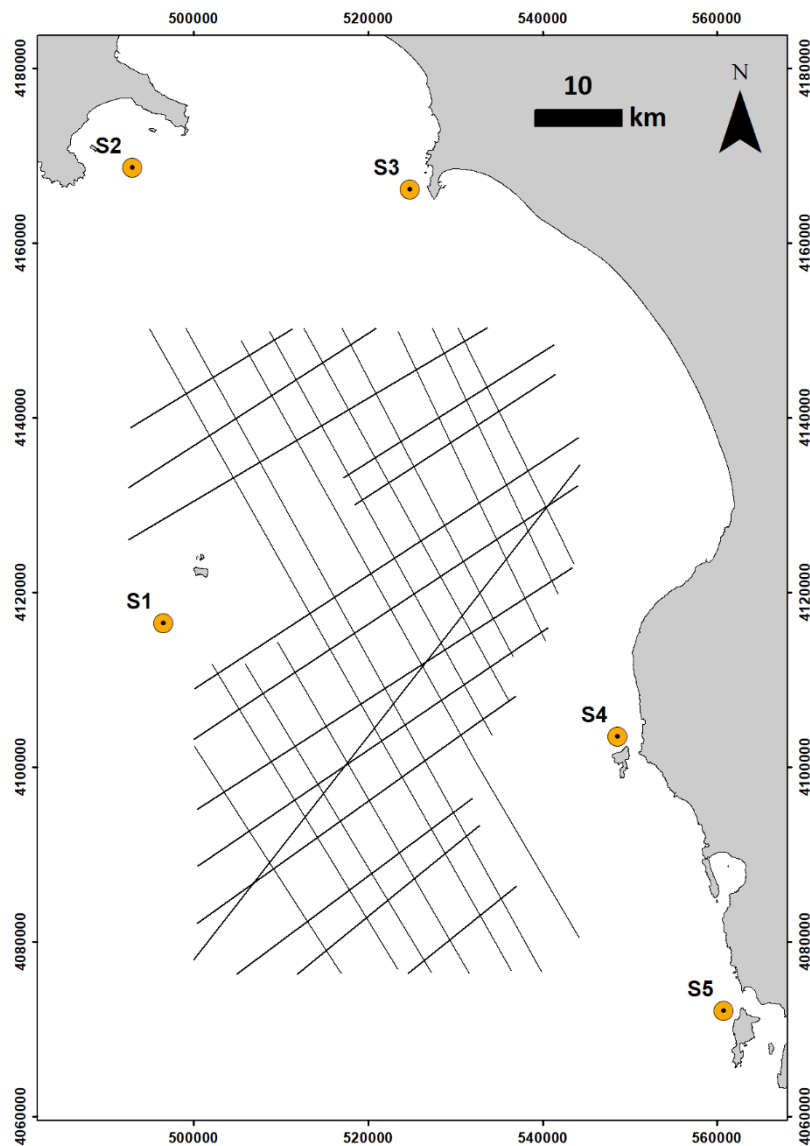


Fig. 3.1. Map of the Kyparissiakos Gulf survey area showing the visually inspected coastal areas.

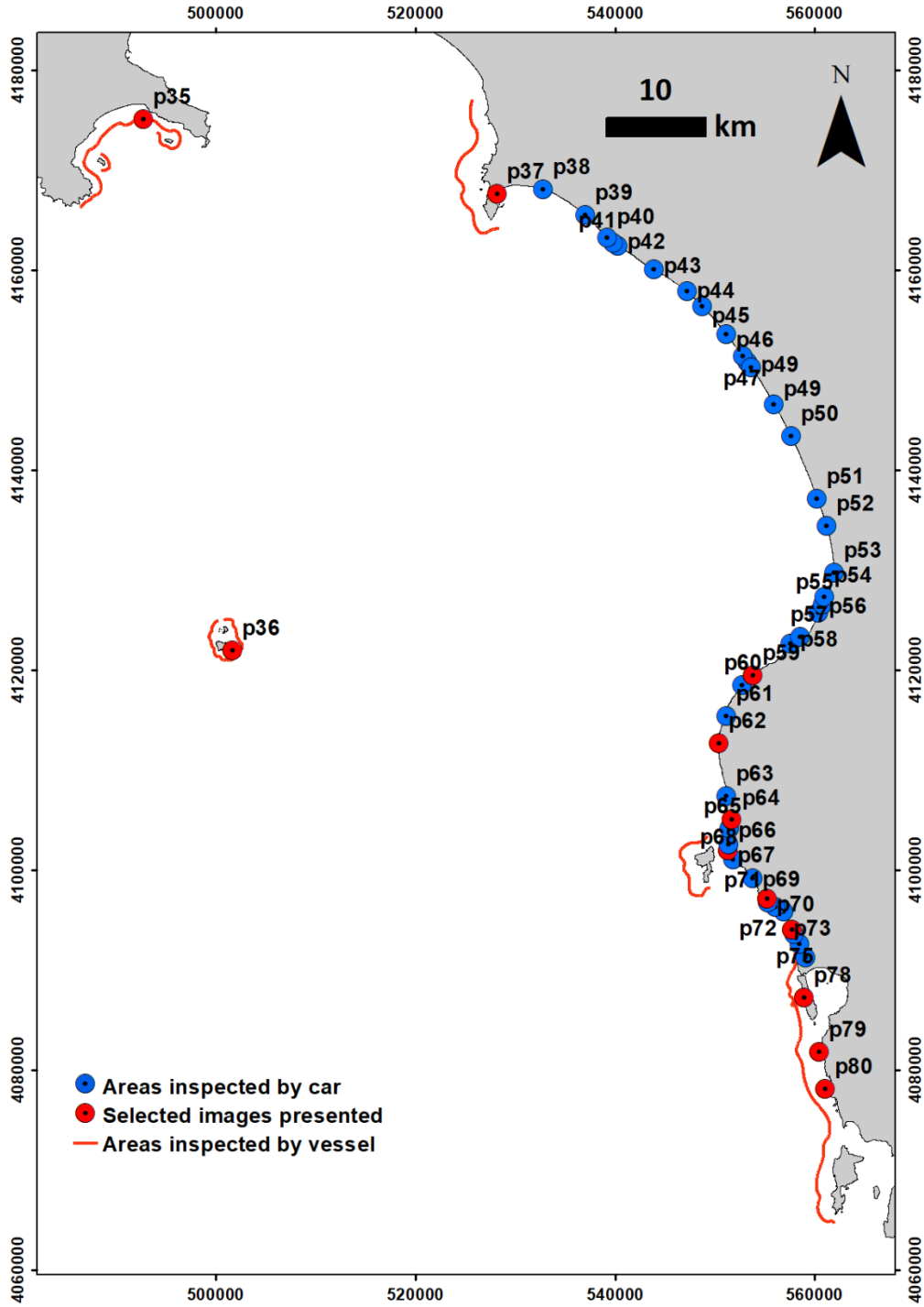


Fig. 3.2. Map of the Kyparissiakos Gulf survey area showing the visually inspected coastal areas.

P35:



P36:



P37:



P60:



P62:



P64:



P67:



P70:



P73:



P78:



P79:



P80:

